

## STANDARD EQUIPMENT

- Depth scale and adjustable depth stop
- Automatic tool ejector
- Thermomagnetic switch
- Emergency STOP push button
- Spindle reversing switch
- Slow / fast speed selector
- Machined base with coolant tank
- Worklight
- Safety drill guard with microswitch
- CE mark



With rotating table plate and tilting support (MGI).



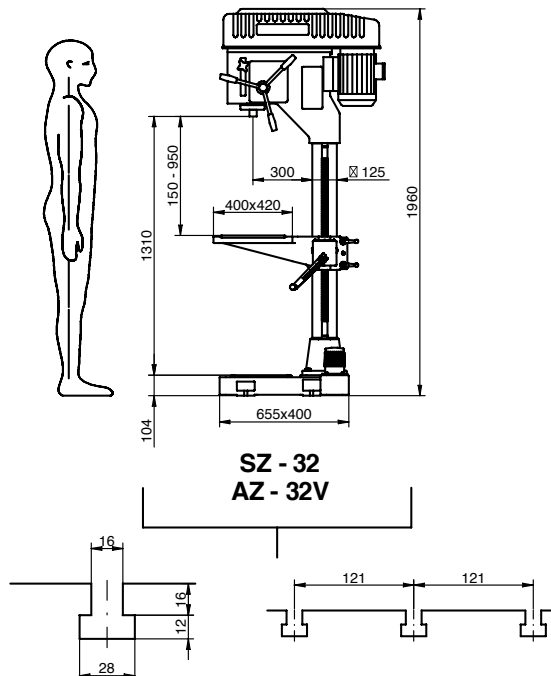
With reversible tiltable with vice (MGM).



With co-ordinate cross table (MCC).

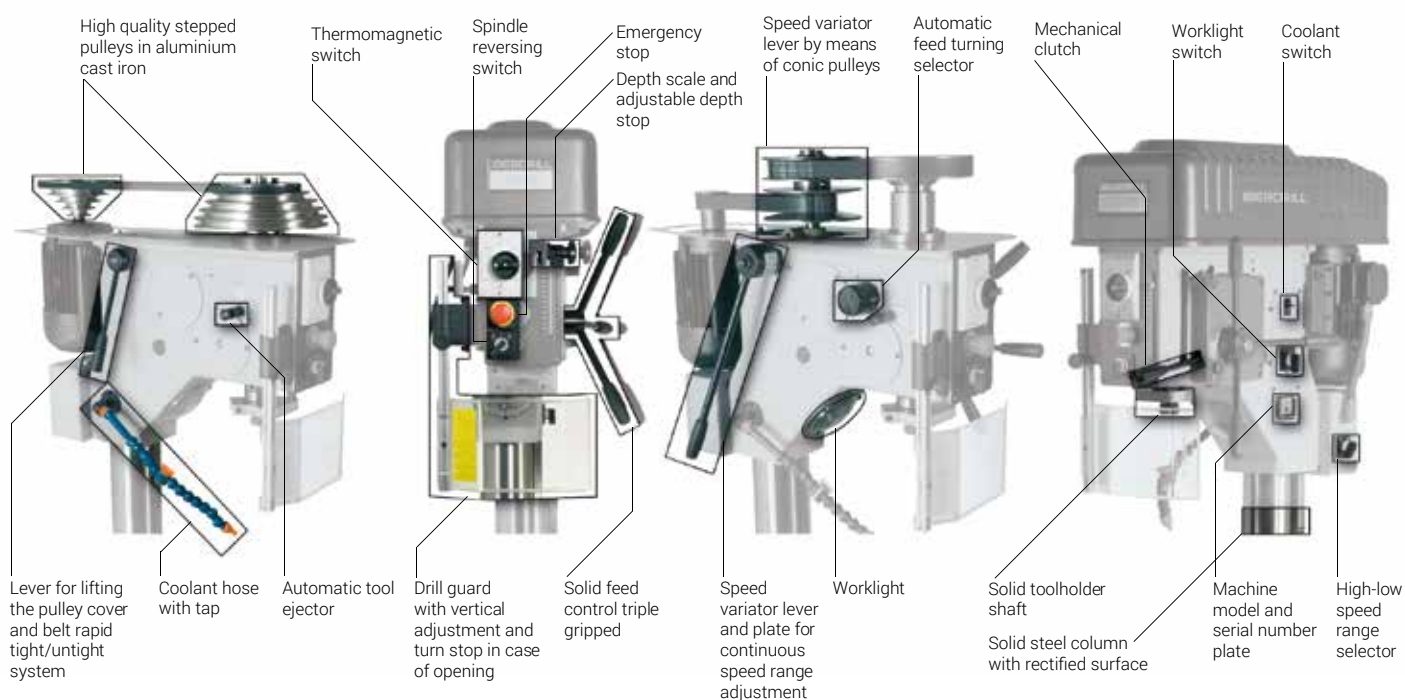
## DIMENSIONS

Round column



# Z SERIES

## Round Column - Belt transmission



### || CHARACTERISTICS

#### SZ-32

#### AZ-32V

Maximum drilling capacity in steel St. 50/60	[∅ mm]	32	
Maximum drilling capacity in cast iron 200 Brinell	[∅ mm]	35	
Maximum tapping capacity in steel St. 50/60	[mm]	M 22	
Maximum tapping capacity in cast iron 200 Brinell	[mm]	M 30	
Morse Taper MT	[Nr.]	3	
Maximum spindle stroke (drilling depth)	[mm]	150	
Main motor power	[HP (Kw)]	1,20 / 1,80 (0,9 / 1,3)	
Coolant pump motor power	[HP (Kw)]	0,10 (0,07)	
Transmission		Belt drive	Belt drive
Number of speeds		10	Continuous
Speed range with motor at 750/1500 rpm 50 Hz Tri. Upon request: Motor at 900/1800 rpm 60 Hz Tri.	[rpm]	145-220-290-345 440-540-690-860- 1080-1720	80-1170
Feed		Manual	Automatic
Nr. of automatic feeds		-	2
Automatic feed range	[mm/rev]	-	0,1-0,2
Worktable dimensions (LxW).	[mm]	400x420	
Column diameter	[mm]	125	
Distance from spindle centre to column face	[mm]	300	
Net weight	[Kg]	260	290
Gross weight with packing	[Kg]	310	340
Packing dimensions (length x width x height)	[m]	2,3x0,6x1,1	

# SERIE Z

## STANDARD EQUIPMENT



- Electronic speed inverter
- Speed setting potentiometer
- Digital rpm counter
- RS Automatic feed reversing system for tapping
- Depth scale and adjustable depth stop
- Automatic tool ejector
- Emergency STOP push button
- Rightwards turn push-button
- Leftwards turn push-button
- Electric equipment integrated on machine's head
- Machined base with coolant tank
- Worklight
- Safety drill guard with microswitch
- Fixed table only for 34 model
- Rotating and tilting table only for 40 model
- CE Mark

ø 34 mm ø 40 mm	M 27 M 33	3 Kw 4,12 Kw	MT 4 MT 4	150 mm 180 mm	ø 125 mm ø 150 mm	300 mm 350 mm



Con mesa giratoria inclinable (MGI).



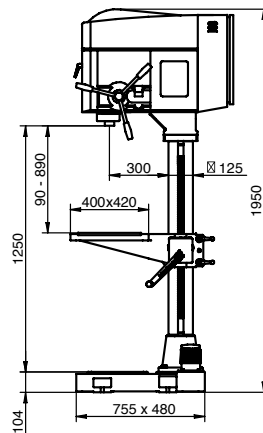
Con mesa giratoria inclinable reversible con mordaza (MGM).



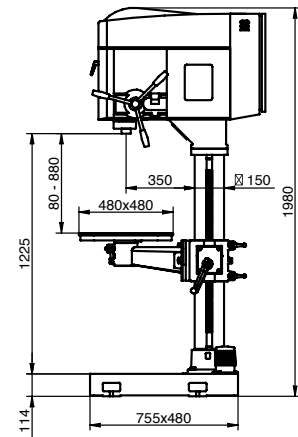
Con mesa de coordenadas por husillos (MCC).

## DIMENSIONS

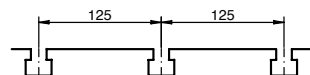
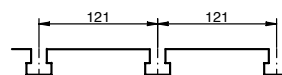
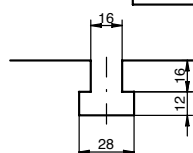
Round column



**SZ - 34**  
**AZ - 34**  
**BZ - 34**

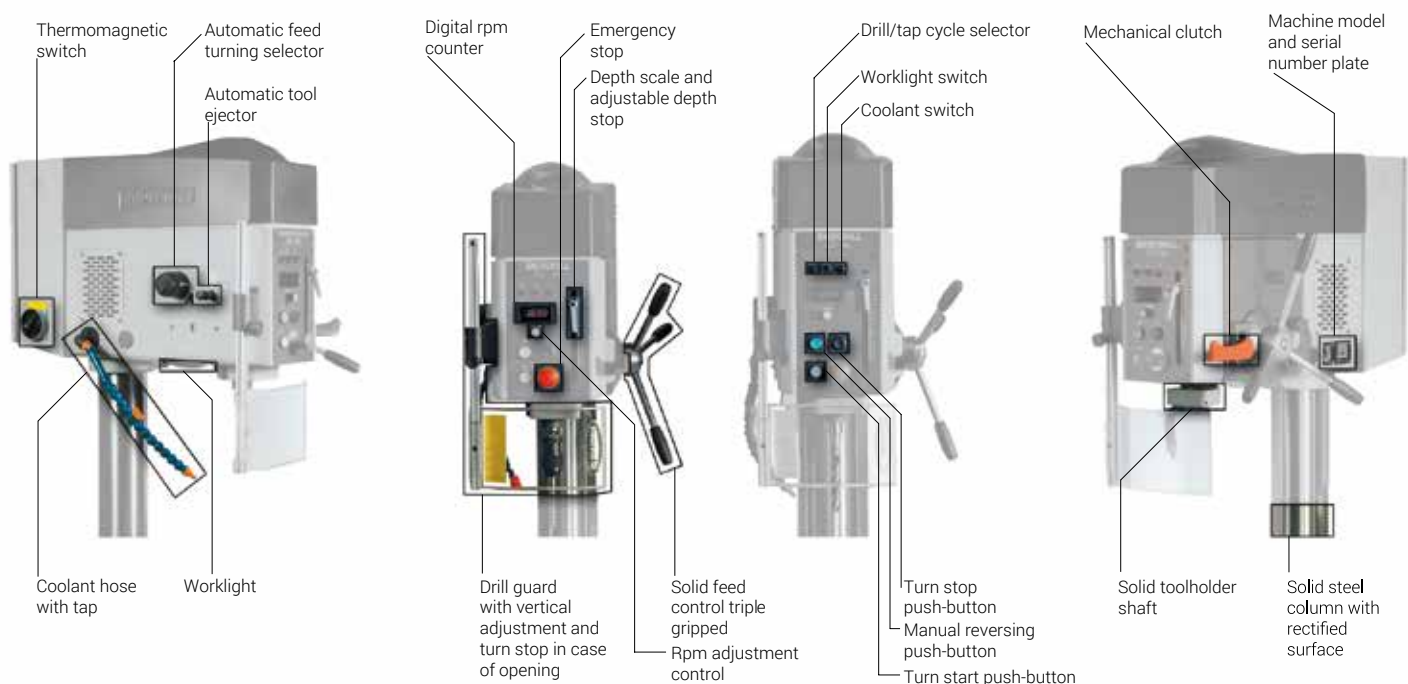


**SZ - 40**  
**AZ - 40**  
**BZ - 40**



# Z SERIES

## Round Column - Belt transmission



### || CHARACTERISTICS

### SZ-34    AZ-34    BZ-34    SZ-40    AZ-40    BZ-40

Maximum drilling capacity in steel St. 50/60	[ø mm]	34			40		
Maximum drilling capacity in cast iron 200 Brinell	[ø mm]	40			45		
Maximum tapping capacity in steel St. 50/60	[mm]	M 27			M 33		
Maximum tapping capacity in cast iron 200 Brinell	[mm]	M 33			M 39		
Morse Taper MT	[Nr.]	4					
Maximum spindle stroke (drilling depth)	[mm]	150			180		
Main motor power	[HP (Kw)]	4 (3)			5,5 (4,12)		
Coolant pump motor power	[HP (Kw)]	0,10 (0,07)					
Transmission		Belt					
Number of speeds		Continuous					
Speed variator type		Electronic					
Speed range with motor at 1500 rpm 50 Hz 3Ph. Upon request: Motor at 1800 rpm 60 Hz 3Ph. (118-2360 rpm)	[rpm]	100-2000					
Feed		Manual	Automatic		Manual	Automatic	
Nr. of automatic feeds		-	3		-	3	
Automatic feed range	[mm/rev]	-	0,1-0,2-0,3		-	0,1-0,2-0,3	
Worktable dimensions (LxW).	[mm]	400x420			480x480		
Column diameter	[mm]	125			150		
Distance from spindle centre to column face	[mm]	300			350		
Net weight	[Kg]	345	360	370	445	460	470
Gross weight with packing	[Kg]	395	410	420	495	510	520
Packing dimensions (length x width x height)	[m]	2,3x0,6x1,1					

# OPTIONAL EQUIPMENT

## TABLES INCLUDING SUPPORTS



**MF**  
Fixed table.  
Standard for **EK/T/Z/X(32-34)** series.



**MGI**  
Rotating table plate and tilting support.  
Available for **Z/X/A/B/C** series.



**MGM**  
Reversible rotating tiltable with vice.  
Available for **Z/X (32/34)** series.



**MCC-125**  
Cross table over support.  
Available for **Z/X (32/34)** series.



**MCC-150**  
Cross table over support.  
Available for **Z/X (40)** series.

## CROSS TABLES



**MB2**  
Cross table.  
X = 280 mm.  
Y = 180 mm.  
Table net weight = 40 kg.  
Available for **Z/X** series.



**MB3**  
Cross table.  
X = 400 mm.  
Y = 180 mm.  
Table net weight = 52 kg.  
Available for **Z/X(32-34)** series.



**MB4**  
Cross table.  
X = 500 mm.  
Y = 250 mm.  
Table net weight = 93 kg.  
Available **Z/X/A/B/C** series.



**MB5**  
Cross table.  
X = 700 mm.  
Y = 250 mm.  
Table net weight = 150 kg.  
Available for **Z/X(40)/A/B/C** series.

**SPEED CONTROL / MEASURE / TAPPING**



**VE**  
Standard for **Z(34-40)**, **BC-40VE** and **BC-50VE**.  
Available for other models upon request.



**TAK**  
Digital rpm counter.  
Standard for **Z (34-40)** and **C** series.  
Available for other models upon request.



**LBC**  
Depth scale read-out system.  
Available for all series.



**RS**  
Automatic feed reversing for tapping.  
Standard for **Z(34-40)** y **C** series.  
Available for all series.

**SPEED CONTROL / MEASURE / TAPPING**



**CN**  
Pneumatic counterbalance for spindle return (recommended with multi-spindle head applications).  
Available for **X/A/B/P** series.



**ACNL**  
Automatic drilling cycle with rapid approach, working feed and rapid retract.  
Available for **B** models on **Z/X/B/P** series.



**CI**  
Integral drilling cycle with encoder (recommended for tube and profile drilling, deep drilling operations, etc.).  
Available for **B** models on **Z/X/B/P** series.



**HB**  
Hydro-pneumatic power feed unit.  
Available for **EK/T/Z/X** series (only for manual feed models).



**CM**  
Multi-spindle drilling heads with fixed or adjustable spindles.  
Available for all series.



**ML**  
Microlubrication system.  
Available for all series.



# OPTIONAL EQUIPMENT

## STANDARD ASSEMBLY FOR JOBS USING MULTI-SPINDLE HEADS

### Accessories and functions

**ACNL**

Automatic drilling cycle with rapid approach, working feed and rapid retract, with additional pneumatic counterweight function for the multi-spindle head.

**UC**

Union, dragging cone and assembly of the multi-spindle head.

**CM**

Multi-spindle head with fixed or adjustable (see picture) spindles.

**GM**

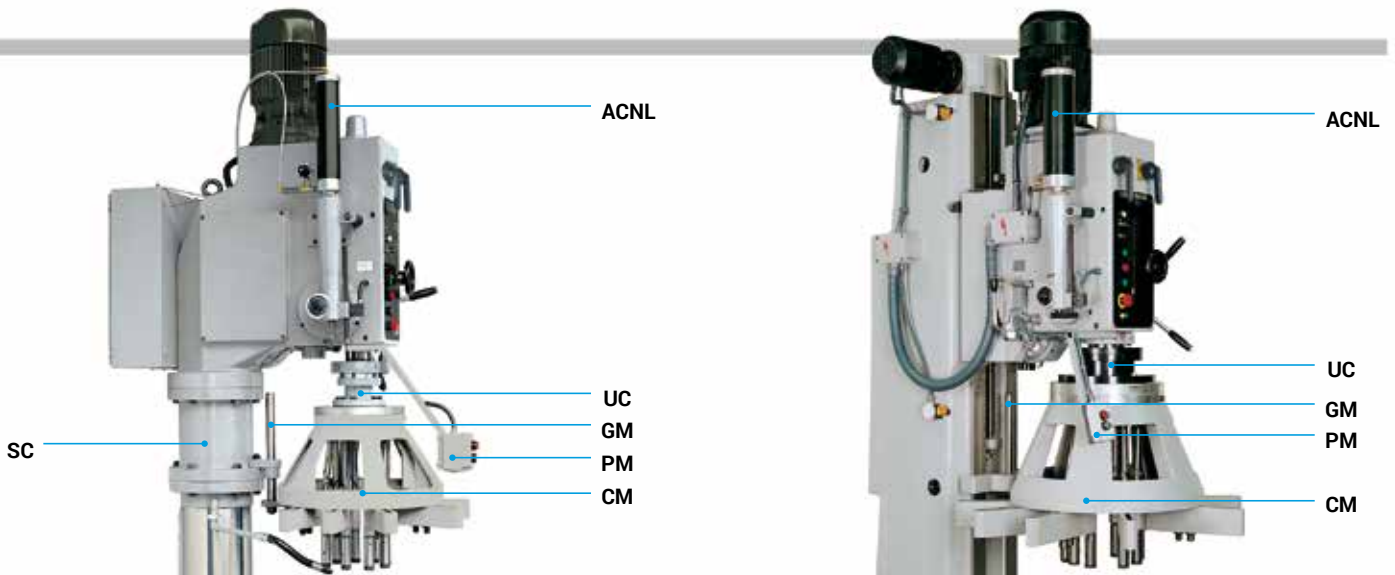
Multi-spindle head guide rod.

**PM**

START/STOP and emergency STOP control extension.

**SC**

Column riser of 200 mm for greater distance between spindle nose and worktable.



## TOOL HOLDERS



**DRILL-CHUCKS**

Self-centering drill-chuck from dia. 3 to dia.16 Morse taper 3 & 4. Available for all series.



**TAPHOLDER**

Morse taper, tapholder and tapping collets.



**REDUCING SLEEVES**

Self-centering drill-chuck from dia.1 to 16 Morse taper 3-4 & 5. Available for all series.

## STANDARD VICES



### SL-116

Vise with fixed base (Light Series).  
Maximum opening: 116 mm  
Jaw width: 105 mm  
Jaw height: 31,5 mm  
Net weight: 8,5 kg.  
Available for **EK/T/Z/X/A/B/C** series.



### SL-160

Vise with fixed base (Light Series).  
Maximum opening: 160 mm  
Jaw width: 125 mm  
Jaw height: 41,5 mm  
Net weight: 4,7 kg.  
Available for **EK/T/Z/X/A/B/C** series.



### FL-116

Vise with fixed base.  
Maximum opening: 116 mm.  
Jaw width: 100 mm.  
Jaw height: 31,5 mm.  
Net weight: 9 Kg.  
Available for **Z/X/A/B/C** series.



### FL-157

Vise with fixed base.  
Maximum opening: 157 mm.  
Jaw width: 125 mm.  
Jaw height: 41,5 mm.  
Net weight: 15 Kg.  
Available for **Z/X/A/B/C** series.

## RAPID CLOSE AND SELF-CENTERING VICES



### FR-80

Opening-cam rapid close vice.  
Maximum opening: 80 mm.  
Jaw width: 80 mm.  
Jaw height: 20 mm.  
Net weight: 6 Kg.  
Available for all series.



### FR-125

Opening-cam rapid close vice.  
Maximum opening: 125 mm.  
Jaw width: 125 mm.  
Jaw height: 30 mm.  
Net weight: 23 Kg.  
Available for all series.



### FK-103

Self-centering vice.  
Maximum opening: 103 mm.  
Jaw width: 103 mm.  
Jaw height: 20 mm.  
Net weight: 12 Kg.  
Available for all series.

## CHUCKS, FOOT PEDALS...



### PL

Manual jaw chuck.  
Available for all series.



### PN

Pneumatic jaw chucks.  
Available for all series.



### PST

Cycle or spindle turn START foot pedal.

### PSR

Spindle turn reverse foot pedal (for tapping)  
Available for all series.



### PEM

Emergency STOP foot pedal.  
Available for all series.